

*Your Simmental Source for Maternally Proficient Genetics*

*Sandeen Genetics*  
*Presents*  
**Buildin' A Brand**

*December 14, 2024 - Blakesburg, IA*  
*High Noon*

### Sale Staff:

Jered Shipman, Auctioneer 806-983-7226  
Tom Rooney, Special Assignment 515-491-6025  
Dalton Lundy, Consultant 502-727-6898  
Thomas Lundy, Consultant 502-471-0354  
Kelvin Jorgensen, Consultant 402-366-9475  
Mike Marlow, Consultant 405-880-0108  
Buddy Roberston, Consultant 580-747-7000  
Kendall Bremer, Consultant 641-799-4911  
Matt McFarlane, Consultant 916-803-3113  
Kent McCune, Consultant 817-602-8629  
Greg Miller, Consultant 608-778-8785  
Jim Henderson, Canadian Consultant 403-740-9270  
Austin Brandt, Midwest Marketer 712-621-1829  
Shane Ryan, Midwest Marketer 309-371-7490  
Dr. Dewy Nibe, Sale Vet 641-777-9881

### Sale Location:

Sandeen Sale Facility at Sandeen Farms.  
Physical Address: 3261 Monroe-Wapello Rd  
Blakesburg, Iowa 52536

### Area Motels (20 minutes from sale site):

Hampton Inn, Ottumwa, IA 641-814-8888  
Cobblestone Inn, Ottumwa, IA 641-244-3645  
Holiday Inn Express, Ottumwa, IA 641-814-4500  
Fairfield Inn, Ottumwa, IA 641-682-0000

### Air Transportation:

Des Moines Airport is 1 1/2 hours away, Kansas  
City is 3 1/2 hours away. Light aircraft service at  
Bloomfield and Centerville, IA.

### Sale Videos:

Brad Hook Promotions 641-344-3193

### Sale Management:

Dwyer Cattle Services  
Bob Dwyer 309-337-1404  
Nick Dwyer 309-337-6404  
Online [www.dwyercattle.com](http://www.dwyercattle.com)



*Sandeen Genetics Presents*

# BUILDIN' A BRAND

**Saturday December 14, 2024**  
**High Noon • Blakesburg, IA**

3261 Monroe-Wapello Rd

Blakesburg IA 52536

Scott Sandeen 641-777-9153

[www.sandeengenetics.com](http://www.sandeengenetics.com)

### Guest Consignors:

**Ferguson Cattle Co.**

John 440-478-0782

Lindsey 440-478-0503

**Triple G Livestock**

Nate Greiner 641-660-4065

**T-K Ranch**

Kyle Kirkpatrick 641-777-3508



Scan the code for our Sale Location!  
Will open up in your Maps App!



*Online Video*

*Previews Available*

*[www.sandeengenetics.com](http://www.sandeengenetics.com)*

## *Welcome to the Offering*

Please consider this your personal invitation to join us for the 15<sup>th</sup> annual “Buildin’ A Brand” production sale. This year will mark 25 years of having production sales, which began in 2000 with Brad Hook and the “No Bull” Bred Female sale. Through all of these years, what we find to be most astonishing and humbling, is just how many customers and friends have attended and bought from many or most of these sales, and yet every year we are gratified to be greeted with more new faces along the way. We certainly appreciate the loyalty and enjoy the feedback and success stories from those that have purchased our genetics over the years. We are also grateful to each and every one of you for taking the time out of your extremely hectic schedules to come and evaluate our program! Our hope is that you find the genetics represented here, offer an opportunity for you to add value to your operation from a program that stands behind its product 100%!

This year will mark the second sale we’ve had without Dad here to help us navigate the process. I will always credit him with being a visionary in many ways, especially when it came to his insight into the cattle industry. He could see years ago that the big, tall, hard-doing Simmentals were not the direction he felt the industry should go. He simply felt you couldn’t afford to feed them and looking back, he was right. He was not a fan of the “carcass” era cattle because, in his mind they were breeding much of the actual “Pay-Weight Product” and the “Maternal Goodness” out of them. And again, it appears he was right. With these things in mind we recognized, what we felt, was a need in the Simmental gene-pool for a more efficiently constructed, maternal oriented type female. A cow that would function and produce at an exceptional level under real-world environmental factors. With this in mind we made a commitment to concentrate solely on producing and marketing highly maternal bred females, rather than fixating on the show heifer market as many respectable breeders have chosen to do. We appreciate the fact that our unwavering commitment to producing highly efficient, functional cattle that are productive, fertile, and long lasting, is able to be utilized outside of our operation. We concentrate very hard on building up from cow families that have these inherent traits deeply embedded in their heritage. It leads to a much higher degree of consistency in the success of generational progression. To further enhance our genetics, we have been working diligently to isolate particular outliers within our gene-pool, that will consistently allow an advantage for the customers that require further growth and performance without effectively sacrificing that invaluable efficiency and capacious big bodied design that we demand in order to produce cows that thrive on forage alone, without additional supplementation.

Most importantly, we want to take this opportunity to thank everyone who helps us throughout the year. We are incredibly blessed with family, friends, and neighbors that work around here as needed. Many of you adjust your schedules at moment’s notice to come help. We want to acknowledge our kids and all the work that they do to help keep everything moving forward. We’re very proud of Kennedy and Logan for the bold endeavors they’ve taken on to help in the future progression of the operation, by attending studies at Iowa State University, in the fields of Ag Business and Engineering. The two younger boys, Wyatt and Lawson, may never see the inner workings of a University campus;) but they are the absolute Life-Blood of this operation. Though they’re always referred to as “The Boys”, they work like Men!! At 15 & 17 years old, they have stepped up and taken on much of the responsibility and work load on the ranch, while working around their school schedules. These kids give us a great deal of the satisfaction and pride in knowing that the Sandeen Legacy, that we’ve worked so hard to build, will thrive in the next generation! I also need to thank my brother, Eric for stopping whatever he’s working on, to get whatever I’ve broken, back up and running. We really appreciate all that you do and could not do it without you! I’m not sure how to express just how truly grateful we are for all that our wives do for us. They cook all the meals for the crews that work around here, while also helping out wherever needed and keep everything else in line (including us at times). We could not, and would not do it without you!

***On a final note, one thing we want both, our customers and our crew to know, is a line that was a staple for Dad... “We don’t expect it, we appreciate it”!!***

### *The Sandeen’s*



*Tim & Rhonda Sandeen*



*Scott, Jill, Logan, & Lawson Sandeen*



*Eric, Julie, Kennedy, Tray,  
& Wyatt Sandeen*

# *Sandeen Donna Tribe*



Coleman Donna 386



Sandeen Donna 8386



\$524K - Sandeen Donna 8302



Sandeen Donna 5120



\$32K - Sandeen Donna 1640



\$210K - Sandeen Donna 1031



\$81K - Sandeen Donna 1717



Sells as Lot 5 - Sandeen Donna 3841



\$140K - Sandeen Donna 0747



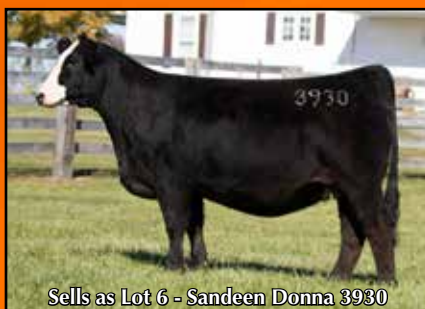
\$200K - Donna 1142



Sells as Lot 12 - Sandeen Donna 3648



\$130K - Sandeen Donna 1316



Sells as Lot 6 - Sandeen Donna 3930



Sells as Lot 4 - Sandeen Donna 3302

*Your Simmental Source for Maternally Proficient Genetics*



Lot 1

**1**

***Sandeen Donna 4106***

3/12/24 • PB Simmental • ASA 4431573 • P • Tattoo 4106

OMF Epic E27

Ruby SWC Battle Cry 431B

**WINC All Right 213K**

**Sandeen Donna 8302**

WINC Hollie

Sandeen Donna 5120

CE	BW	WW	YW	Milk	Stay	API
13.0	-1.3	78.9	118.0	26.2	13.4	120.9

Open Heifer



WINC All Right 213K

I don't think we would be out of line saying this WINC All Right daughter is the most complete, most fault free, perhaps most phenotypically impressive Donna 8302 daughter we have offered to date. She just simply exemplifies "Good Stock" to the utmost extent.

Every year I find myself thinking there's no way Sandeen Donna 8302 can out-do herself, and yet every year she just seems to grab another gear! There are very few matrons in history that have been able to accomplish this to such a high degree, but when they do we certainly need to identify, harness, and build upon those genetics!

Sandeen Donna 4106 represents, what we consider to be a Genetic Masterpiece. If you're genuinely interested in improving your genetic base and contributing a positive impact to the future of the Simmental gene pool, this is an individual that warrants serious consideration!

# Sandeen Donna 8302



Lot 2

2

## Sandeen Donna 8302 Embryos

PB Simmental Donor • ASA 3564034 • Packages of 3 Embryos

- A. GCC Genoa Hfr Sexed Ruby SWC Battle Cry 431B  
 B. W/C Red Bird Hfr Sexed Sandeen Donna 8302  
 C. K&A Promise Keeper Hfr Sexed Sandeen Donna 5120

CE	BW	WW	YW	Milk	Stay	API
11.9	-1.6	74.3	115.3	22.2	11.9	106.5

Donor EPD's Listed



W/C Red Bird



K&A Promise Keeper

## Sandeen Donna 8302 Daughters



\$210K - Donna 1031



\$200K - Donna 1142



\$140K - Donna 0747



\$71K - Donna 1717



\$32K - Donna 1640

8302 Donor Tree



Coleman Donna 5120



Sandeen Donna 8386



Coleman Donna 386

Sandeen Donna 8302 would have to arguably be considered the most influential genetic contributor of the Donna tribe, ever to graze the hills of the Sandeen Ranch. Every year it appears there's no way she can out-do herself again and yet every year she just seems to grab another gear. This is evident by the largest and most impressive offering of descendants to date, represented in the first several pages of this catalog. Donna 8302 has currently surpassed the \$1.5 million mark in lifetime earnings. A milestone that has been achieved by very few matriarchs throughout history (of any breed), proving the unique genetic value of the contributions made by such an individual.

Past progeny sale highlights include: \$210,000 Sandeen Donna 1031 going to Jones Show Cattle, OH; \$200,000 Sandeen Donna 1142 selling to Ferguson Cattle Co, OH; \$140,000 Sandeen Donna 0747 purchased by Eash Land & Livestock, IA; \$81,000 Sandeen Donna 1717 to Mike Henderson Family, IA; \$61,000 Sandeen Donna 3103 to Draper Family Cattle, IL; \$53,000 Sandeen Donna 3025 to Triple G Livestock, IA; \$40,000 Sandeen WarLord to Ferguson Cattle Co, OH; \$32,500 Sandeen Donna 1640 to Rob & Deanne Young, CAN.

A rare opportunity indeed, to acquire the freshest sexed female embryo matings from a breed impacting matriarch of this caliber.



Lot 3

**3**

***Sandeen Donna 4930***

4/4/24 • PB Simmental • ASA 4431574 • P • Tattoo 4930

KRJ Dakota Outlaw G974

Ruby SWC Battle Cry 431B

**Next Level**

**Sandeen Donna 8302**

KRDL Caedence C37

Sandeen Donna 5120

CE	BW	WW	YW	Milk	Stay	API
10.7	1.2	80.4	122.1	22.8	11.7	106.4

Open Heifer



Next Level

The Next Level sire group has been on fire for the last year at many sales and shows across the country. Please don't hold the greener condition of Sandeen Donna 4930 against her, as she was raised by a very dependable 15 year old recip. From a structural standpoint, she's impressive! From a genetic standpoint, even more so! Next Level X Sandeen Donna 8302! I would consider that to be a very marketable, very high-quality pedigree anywhere in the North American, with a top-tier quality individual tied to it.



Lot 4

**4**

***Sandeen Donna 3302***

4/14/23 • PB Simmental • ASA 4359690 • P • Tattoo 3302

Yardley Utah Y361

Ruby SWC Battle Cry 431B

**W/C Relentless 32C**

**Sandeen Donna 8302**

Miss Werning KP 8543U

Sandeen Donna 5120

CE	BW	WW	YW	Milk	Stay	API
10.8	0.9	72.9	104.0	19.9	10.0	106.6

AI 7/14 WHF/JS/CCS Double Up G365



WHF/JS/CCS Double Up G365

Sandeen Donna 3032 was Lawson's show heifer for the county fair this year and undoubtedly one of the best of this monumental flush of Relentless x Donna 8302 sisters. This is the very same mating that produced the \$210,000 crowd favorite, Sandeen Donna 1031, in the 2023 Buildin' A Brand Sale. Donna 3302 is a wide muzzled individual, which generally leads to a highly productive, broody female once they enter production. She's near flawless in her hip and hind leg structure with the exceptional depth of flank that tends to be a trademark of her dam. Interestingly enough Donna 3302 was raised by the very same recip that raised her dam, Sandeen Donna 8302. Unfortunately, this time the recip was a bit past her prime at 17 years of age, which caused 3302 to fall behind as a calf. This, I believe, lead to her to not reaching maturity in order to cycle until the breeding date listed in the catalog (a date on which she settled first service). Anyone that knows our operation, knows that fertility is of the utmost importance here. So, if we felt a heifer (even of this caliber) had any kind of fertility issues, she would certainly not be this high up in the catalog order. That being said this is one incredibly impressive individual from the ground up and I have confidence that she will produce at a very fertile rate just as we have come to expect from the "Donna's".



Lot 5

**5**

***Sandeen Donna 3841***

3/11/23 • PB Simmental • ASA 4431571 • P • Tattoo 3841

W/C Fort Knox 609F

Ruby SWC Battle Cry 431B

**W/C Bet on Red 481H**

**Sandeen Donna 8302**

W/C Angel 7113E

Sandeen Donna 5120

CE	BW	WW	YW	Milk	Stay	API
12.6	-0.3	74.3	115.0	22.3	11.6	116.7

AI 4/10 to THSF Lover Boy B33



W/C Bet on Red 481H

Wow factor is definitely engaged on this one!

This flush of Bet On Red x Donna 8302 is just incredibly good! A flush sister sold in last year's open heifer division of the Build A Brand Sale, for \$53,000 to Triple G Livestock.

Sandeen Donna 3841 blends the elegance of a true lady with the wedge-shaped design that we consistently notice in our longest lasting, most highly productive females. That capacious bold sprung rib cage insures she will operate at a high degree of efficiency.

Expect a near perfect udder on one of the most beautiful Simmental females you'll have ever laid eyes on when she gets ready to calve in January.

# Sandeen Donna 3930



Lot 6

6

## Sandeen Donna 3930

3/6/23 • PB Simmental • ASA 4431569 • P • Tattoo 3930

W/C Fort Knox 609F

Ruby SWC Battle Cry 431B

W/C Bet on Red 481H

Sandeen Donna 8302

W/C Angel 7113E

Sandeen Donna 5120

CE	BW	WW	YW	Milk	Stay	API
12.6	-0.3	74.3	115.0	22.3	11.6	116.7

AI 4/11 to Rocking P Private Stock H010



Rocking P Private Stock H010

I predict these Bet On Red x Donna 8302 females are going to be some of the most beautiful Simmental cows we've ever seen in production, with Donna 3930 ranking in the upper echelon of that list!

She offers a slight advantage in terms of overall size and power relative to her contemporaries, yet without sacrificing that femininity and elegance that we appreciate in a female.

Sandeen Donna 3930 is certainly the caliber to highlight a progressive donor program and one that definitely needs to be on your short list.



Lot 7

**7**

***Sandeen Donna 3032***

3/11/23 • PB Simmental • ASA 4431570 • P • Tattoo 3032

W/C Fort Knox 609F

Ruby SWC Battle Cry 431B

**W/C Bet on Red 481H**

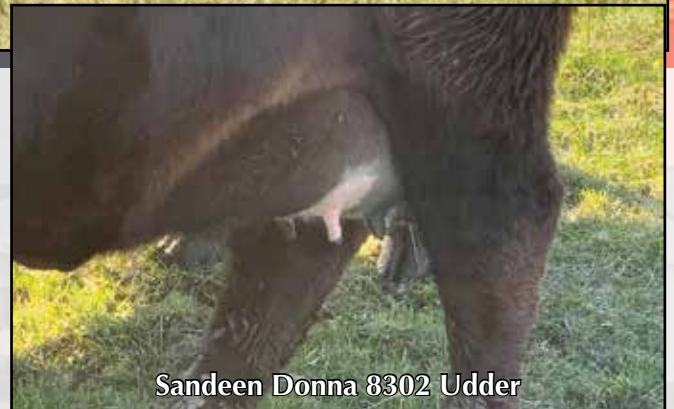
**Sandeen Donna 8302**

W/C Angel 7113E

Sandeen Donna 5120

CE	BW	WW	YW	Milk	Stay	API
12.6	-0.3	74.3	115.0	22.3	11.6	116.7

AI 5/16 WHF/JS/CCS Double Up G365



**Sandeen Donna 8302 Udder**

Sandeen Donna 3032 was in contention to be Lawson's show heifer this past summer. Study her structure! The fluidity of movement due to the flexibility of joints. Awesome head, neck, and ear set. Small, well-placed teats which will lead to a beautiful udder on a Stellar female when she calves!

Now factor in the genetic aspect of the equation: 8543 being the grandam in each of the 4 slots in Bet On Red's three-generation pedigree. Sandeen Donna 8302, Sandeen Donna 5120, Sandeen Donna 8386, Coleman Donna 386, KMK Donna J311.

That is a lot of cow power in one pedigree!!



Lot 8

**8**

***Sandeen Donna 3640***

2/22/23 • PB Simmental • ASA 4431565 • P • Tattoo 3640

Yardley Utah Y361

Ruby SWC Battle Cry 431B

**W/C Relentless 32C**

**Sandeen Donna 8302**

Miss Werning KP 8543U

Sandeen Donna 5120

CE	BW	WW	YW	Milk	Stay	API
10.8	0.9	72.9	104.0	19.9	10.1	106.1

AI 4/5 to THSF Lover Boy B33



**Sandeen Donna 1031 - Full Sibling**

From a phenotypic and structural standpoint, Sandeen Donna 3640 most closely mirrors her \$210,000 sister, Sandeen Donna 1031. Though 1031 had a 6-month age advantage at this point last year, Donna 3640 very closely replicates her in terms of her near ideal structure, her high head, neck, and ear set, and her added size and power, with the addition of the bald face.

This Relentless x Donna 8302 has been a truly magical mating with resulting offspring ranging from \$18K-210K. We've always been more impressed with a mating that creates several really good ones, rather than one great one-hit-wonder. If the mating results in several really good ones, those cattle tend to breed more consistent, and I think we would have to concur, that this mating has produced a few good ones.

Definitely a headline donor in the making that will offer fertility, udder quality, and unsurpassed predictability.



Lot 9

**9**

***Sandeen Donna 3597***

2/19/23 • PB Simmental • ASA 4431564 • P • Tattoo 3597

Yardley Utah Y361

Ruby SWC Battle Cry 431B

**W/C Relentless 32C**

**Sandeen Donna 8302**

Miss Werning KP 8543U

Sandeen Donna 5120

CE	BW	WW	YW	Milk	Stay	API
10.8	0.9	72.9	104.0	19.9	10.1	106.1

AI 5/7 to WINC All Right 213K



**Sandeen Donna 4106 - All Right x Donna 8302**

Certainly, one of the front runner females out of this Relentless x Donna 8302 flush!

Similar to the lot 8 female (3640), Donna 3597 has the added size, and power that was appreciated about her \$210,000 sister last year, Sandeen Donna 1031, yet lacking the extra 6-month maturity advantage.

There are things about this particular individual that put me in mind of her dam, Donna 8302. So, when we evaluate this mating to WINC All Right and how the lot 1 heifer is the result of a very similar genetic pairing, it starts to calculate just how much promise there is, for not only this initial mating, but also the future impact such an extraordinary donor prospect will likely have.



Lot 10



Sandeen Donna 1031 - \$210K Full Sibling

**10**

**Sandeen Donna 3668**

2/25/23 • PB Simmental • ASA 4431567 • P • Tattoo 3668

Yardley Utah Y361

Ruby SWC Battle Cry 431B

**W/C Relentless 32C**

**Sandeen Donna 8302**

Miss Werning KP 8543U

Sandeen Donna 5120

CE	BW	WW	YW	Milk	Stay	API
10.8	0.9	72.9	104.0	19.9	10.1	106.1

AI 6/3 to Sandeen/SLG Easy Out 512F

**Show heifers producers take heed!**

This is a very special individual indeed. Near flawless through her front one-third, with that high ear set that just simply makes for an attractive female. Excellent in her structural build and offers a high quality hair coat along with all the bells and whistles on this intriguing specimen.





Lot 11



Sandeen Donna 3103 - \$61K Full Sibling

**11**

**Sandeen Donna 3479**

2/20/23 • 1/2 Simmental • ASA 4434354 • P • Tattoo 3479

SAV Renown 3439

Ruby SWC Battle Cry 431B

**Coleman Glacier 041**

**Sandeen Donna 8302**

Coleman Donna 439

Sandeen Donna 5120

CE	BW	WW	YW	Milk	Stay	API
13.0	-1.4	84.4	136.1	25.5	11.6	106.5

AI 4/25 to WINC All Right 213K

Anyone who's followed our program for a number of years likely understands the deep appreciation we have for our halfblood foundation cows. This specific foundation mating of Coleman Glacier x Sandeen Donna 8302 is rapidly gaining popularity here, for their ability to consistently stamp the offspring with the angularity and wedge-shaped design necessary to make long lasting, fertility, productive cows. Sandeen Donna 3479 is certainly no exception to that rule as she too is an impressive individual, indeed! A full sister, Sandeen Donna 3103, was a crowd favorite in the 2023 Buildin' a Brand open heifer division, where she commanded a hammer price of \$61,000 going to a loyal associate of the program, Mr. Tom Draper, IL.

I'm quite confident in the fact Donna 3479 will consistently breed true-to-form due to the backing of her genetic lineage. Representing the Simmental side we have Sandeen Donna's 8302, 5120, & 8386, while respectively on the Angus side of the equation are Coleman Donna's 439, 714 and 2 shots of Coleman Donna 386 & Donna J311, along with SAV Blackcap May 4136, dam of Resource & Renown. Quite a pedigree to back up quite an individual that sells bred to the sire of Lot 1, WINC All Right.



Lot 12

**12**

***Sandeen Donna 3648***

2/18/23 • PB Simmental • ASA 4431562 • P • Tattoo 3648

Yardley Utah Y361

Ruby SWC Battle Cry 431B

**W/C Relentless 32C**

**Sandeen Donna 8302**

Miss Werning KP 8543U

Sandeen Donna 5120

CE	BW	WW	YW	Milk	Stay	API
10.8	0.9	72.9	104.0	19.9	10.1	106.1

AI 4/10 to W/C Lock n Load 1143Y Heifer Sexed Semen



**Sandeen Donna 1031 - Full Sibling**

Sandeen Donna 3648 might exemplify the “Sandeen Kind” as well as any, in this incredible flush of sisters. She’s a bold sprung, highly capacious, mid-sized female with a 3-dimensional build that we certainly appreciate around here. She’s a very docile individual that is in the beginning stages of setting a beautiful udder to support her 1143Y heifer calf that’s on the way.



Lot 13

Lots 13 & 14 are a pair of sisters that are very similar in their type and kind. Both are extremely deep flanked, easy fleshing brood cows in the making. This is the kind that, as they say, keep the ranch profitable each year. High quality individuals with a proven and predictable pedigree that will lend to the marketability of their notable offspring.

**13**

**Sandeep Donna 3856**

2/18/23 • PB Simmental • ASA 4431563 • P • Tattoo 3856

Yardley Utah Y361

Ruby SWC Battle Cry 431B

**W/C Relentless 32C**

**Sandeep Donna 8302**

Miss Werning KP 8543U

Sandeep Donna 5120

CE	BW	WW	YW	Milk	Stay	API
10.8	0.9	72.9	104.0	19.9	10.1	106.1

AI 4/9 to LLW CARD True North G71

**14**

**Sandeep Donna 3323**

2/24/23 • PB Simmental • ASA 4431566 • P • Tattoo 3323

Yardley Utah Y361

Ruby SWC Battle Cry 431B

**W/C Relentless 32C**

**Sandeep Donna 8302**

Miss Werning KP 8543U

Sandeep Donna 5120

CE	BW	WW	YW	Milk	Stay	API
10.8	0.9	72.9	104.0	19.9	10.1	106.1

AI 5/16 to W/C Lock n Load 1143Y Heifer Sexed Semen



Sandeep Donna 1640 - Full Sibling



Sandeep Donna 8302



Lot 14



Lot 15

**15**

***Sandeen Donna 3747***

3/4/23 • 3/4 Simmental • ASA 4431980 • P • Tattoo 3747

W/C Bankroll 811D

W/C Fort Knox 609F

**W/C Bankroll 949F**

**Sandeen Donna 0747**

EXAR Rita 5406

Sandeen Donna 8302

CE	BW	WW	YW	Milk	Stay	API
11.2	0.4	78.8	120.1	24.1	10.4	119.6

AI 4/2 to THSF Lover Boy B33



**Sandeen Donna 0747 - \$140K Dam**

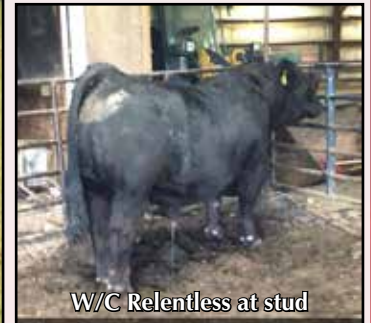
3747 is the first offspring offered at public auction by the \$140,000 Sandeen Donna 0747, and sired by the full brother to Sullivan's \$160,000 show heifer of the year from 2019. This one comes with the high tying neck and high ear set. A very interesting pedigree full of proven genetics in this impressive  $\frac{3}{4}$  blood female.





Lot 16

3995 has certainly got the build and design to be at the front end of the bred heifer line-up. She had the disadvantage of a sub-par recipient mother that worked against her at an early age, but she's done a terrific job of battling back to represent her genetic expectations very well.



W/C Relentless at stud

**16**

**Sandeen Donna 3995**

2/25/23 • PB Simmental • ASA 4431568 • P • Tattoo 3995

Yardley Utah Y361

Ruby SWC Battle Cry 431B

**W/C Relentless 32C**

Miss Werning KP 8543U

**Sandeen Donna 8302**

Sandeen Donna 5120

CE	BW	WW	YW	Milk	Stay	API
10.8	0.9	72.9	104.0	19.9	10.1	106.1

AI 5/20 to Sandeen/SLG Easy Out 512F

**17**

**Sandeen Donna 3270**

2/20/23 • PB Simmental • ASA 4434355 • P • Tattoo 3270

Yardley Utah Y361

Ruby SWC Battle Cry 431B

**W/C Relentless 32C**

Miss Werning KP 8543U

**Sandeen Donna 8302**

Sandeen Donna 5120

CE	BW	WW	YW	Milk	Stay	API
10.8	0.9	72.9	104.0	19.9	10.1	106.1

AI 7/3 to Sandeen/SLG Easy Out 512F

3270 is probably the latest maturing heifer in this flush of Relentless x Donna 8302 sisters, but the very same could be said for her sister, Donna 1031 last year where her 6-month age advantage allowed her to hit 12:00 right at sale time. By the time this one calves, she will definitely look like a very smart purchase.



Lot 17



Lot 18



3069 - \$42K Full Sibling



0344 - \$92K Maternal Sibling



GCC Ms Broker D198

**18**

***Sandeen Lady G 3250***

3/4/23 • 3/4 Simmental • ASA 4431607 • P • Tattoo 3250

W/C Fort Knox 609F

Mr HOC Broker

**W/C Bet on Red 481H**

**GCC Ms Broker D198**

W/C Angel 7113E

Y219

CE	BW	WW	YW	Milk	Stay	API
11.2	1.7	77.2	117.1	20.7	10.4	113.6

AI 4/13 to THSF Lover Boy B33

One of my personal favorites of the entire offering!

3250 is an ideal mid-sized, wide centered, very capacious female with ample foot and bone and extra shot of pizzazz. This one's my kind all day long!

Her Donor dam, GCC Ms. Broker D198 has consistently delivered the goods time and time again. A full sister to 3250 was a favorite of many in the crowd of the 2023 Buildin' a Brand Sale, where she garnered a price tag of \$42,000. Prior to that, D198 had produced a \$100,000 bull, Sandeen High Profile; a \$92,000 bred heifer, Sandeen Lady 0344; and a number of others that have sold well which brings her average per head of offspring to \$43,500.

Cows that can consistently produce at this exceptional rate will generate offspring that will breed true as well. This is a cow family that excels in fertility, foot quality, structure integrity, and milk production.

Sandeen Lady G 3250 has the precise phenotypic build and the genetic heritage necessary to complement and support a number of the sire choices being offered today. Lending towards her future contribution to the Purebred Simmental production industry. She is, in my estimation, the caliber of Foundation Female required to build a highly potent cow family up from.



Lot 19

**19**

***Sandeen Blackbird 3547***

3/6/23 • 1/2 Simmental • ASA 4359688 • P • Tattoo 3547

SVF Steel Force S701

OCC Jet Stream 825J

**Mr HOC Broker**

**Coleman Blackbird 1547**

JM BF H25

Akers Blackbird 9568



CE	BW	WW	YW	Milk	Stay	API
11.1	0.4	63.4	92.4	19.5	14.8	104.7

AI 4/11 to W/C Lock n Load 1143Y Heifer Sexed Semen

“That one’s a load!” direct quote from the Missouri State 4-H judging team coach and C.O.O. of the American Hereford Association, Shane Bedwell. Certainly, one of the most phenotypically stunning individuals in the entire pasture, and undeniably the epitome of a True Foundation Breeding Piece!!

Everyone knows the greatness of the Broker daughters in the show ring. In fact, this young lady was shown to Supreme Champion Female at our County Fair for Wyatt. However, I believe their greatest contribution that history is going to remember will be their incredible productivity as foundation dams in the Simmental pastures across America.

That is precisely where I see the importance of utilizing Blackbird 3547 to create another significant cow family to instill in the Simmental gene pool. One that excels in the most fundamentally important traits, in much the same way as the “Donna” cow family.

Sandeen Blackbird 3547 is derived from a dam that has never once missed calving to the first service in all of her 13 years of life, and will, every year, wean one of the largest calves. She is the epitome of maternal efficiency and is highly proficient in all area’s that we deem of great importance at Sandeen Genetics. To only enhance our confidence in 3547’s ability to consistently propagate these traits, we find she traces back three generations to the dam of OCC Paxton, the sire of Coleman Charlo 0256. To those who aren’t fully versed in the Coleman Angus program, Coleman Charlo is the influential equivalent to the original Coleman Donna Cows in that program.

From both a genotypic and phenotypic standpoint, 3547 has impressed us all of her young life. For that reason, the choice was made to IVF her as a yearling heifer, once she was 40 days bred. At that point she generated 44 Oocytes which cleaved @ 77%. A great testimonial to the fertility and productivity that is deeply ingrained in this phenomenal female, that is charted to write her own chapter in the pages of history.



Sandeen Loaded Lady 2625

**20**

***Sandeen Loaded Lady 2625 Embryos***

PB Simmental Donor • ASA 4113955 • Package of 3 Embryos

Mr CCF 20-20

Conley GCC Shocker C19

**VCL Foresight**

**Sandeen Loaded Lady 2625**

HCCO Countess 412D

Sandeen Loaded Lady 6025

CE	BW	WW	YW	Milk	Stay	API
8.2	4.1	87.5	123.6	18.5	12.0	120.6

Donor EPD's Listed



Sandeen Loaded Lady 4147 - Sells as Lot 25

Sandeen Loaded Lady 2625 is truly a genetic gem! She held the highly regarded "Lot 1" position in the 2022 "Buildin' A Brand" sale, where she topped the open heifer division at \$200,000. She is most definitely built the way we like them. Massively capacious through her rib cage with an angular design through her front one-third and that true wedge-shape that is evident in the most fertile and generative cow families. She derives from an abundantly productive line of cows we've developed here over the past few decades, that are notorious for the added shape, dimension and degree of foot quality they consistently pass down through each generation. These traits are further ingrained by the sire of Loaded Lady 2625, Conley GCC Shocker C19. A bull that tends to consistently enhance many of the attributes that we deem important.

This has become quite a lucrative pedigree in the Buildin' a Brand event! Last year a full sister to 2625 was a highlight of the bred heifer division where she was the preferred selection of MRB Cattle Co at \$125,000. This year we have an exceptionally impressive entry that is of the same mating, in the elite open heifer division in Lot 25, Sandeen Loaded Lady 4147.

An indisputably proven pedigree, only enhanced by the genetic contribution of the great VLC Foresight!



Sandeen Donna 1316

**21**

***Sandeen Donna 1316 IVF Hfr Embryos***

PB Simmental Donor • ASA 3963159 • Packages of 3 Embryos

**A. TJSC Coping with Destiny**  
**B. FRKG Victory**

W/C Relentless 32C  
**Sandeen Donna 1316**  
Sandeen Donna 8405

CE	BW	WW	YW	Milk	Stay	API
7.8	4.1	77.6	114.3	19.1	12.9	103.4

Donor EPD's Listed - Both matings IVF Heifer Embryos

**22**

***Sandeen Donna 1316 Pregnancies***

PB Simmental Donor • ASA 3963159 • Heifer Pregnancy

**A. Countertime due 2/28/25**  
**B. Foresight due 1/29/25**

W/C Relentless 32C  
**Sandeen Donna 1316**  
Sandeen Donna 8405

CE	BW	WW	YW	Milk	Stay	API
7.8	4.1	77.6	114.3	19.1	12.9	103.4

Donor EPD's Listed

Sandeen Donna 1316 made a great first impression with the public, when she sold in the 2021 Buildin' a Brand sale, topping the open heifer division at \$130,000. I'm not sure we've ever sold a female that has done such a phenomenal job at doing everything right in such a limited amount of time. From a phenotypic standpoint, her combination of power and elegance is unparalleled amongst her contemporaries. A still photo can simply not give justice to her three-dimensional build. She stands on a large, densely constructed, correctly shaped hoof and is stout, to say the least, in her skeletal design. She's a wide muzzled, bold centered individual, with a wide pin set to match, yet is still as feminine through her neck and shoulders region as any female on the place.

Most importantly, with her first crop of calves she has proven that she can produce the greatness just as all of the indicators predicted! Her first daughter to be brought before a crowd for appraisal recently topped the '24 Ferguson Cattle Co. Rare Vintage Sale at a figure of \$30,000. The next two pages of this catalog prove that she is one of the rare donor's today that can produce at the highest level in either gender, as demonstrated by a pair of extremely impressive herd sire prospects! It's becoming apparent that Donna 1316 is a very versatile donor that will contribute a great deal to any progressive program with the foresight to tie into her genetics.



Lot 23

**23*****Sandeen Genoa 4462***

3/8/24 • PB Simmental • ASA 4431578 • P • Tattoo 4462

W/C Bet on Red 481H

W/C Relentless 32C

**GCC Genoa 2118K****Sandeen Donna 1316**

JS Black Satin 9B

Sandeen Donna 8405

CE	BW	WW	YW	Milk	Stay	API
8.2	3.6	75.4	112.4	20.6	11.6	103.3

Actual Birth Weight 75#



GCC Genoa 2118K

Very few times have we offered these young herd sire prospects. In fact, it's only when we feel we've got something truly unique to the industry, that we will do it. I believe that "unique", "exceptional" and "impressive" are all adjectives that are very suitable for this pair of future stud sires! Phenotypically they're stout, they're big centered, they're flexible, and they possess the striking profile and high-quality hair coat that certainly assists from the marketing aspect. Genetically, I'm not sure one could secure a pedigree with more prepotent cow-power in all of North America! Sandeen Donna's, Coleman Donna's, 8543 x 5 and Boots!

These are the very first direct sons of the \$130,000 Sandeen Donna 1316 to sell. A matron that is held in very high regard as one of the very top in the Sandeen and Associate's donor arsenal.

Their Sire, GCC Genoa, is a bull that really intrigued us when he sold in the Griswold Classic Sale. Not only for his awesome physical build but perhaps more so, for his genetic lineage. His dam, "Boots" has undoubtedly secured her place in history as one of (if not the) best purebred Broker daughters to exist. And his sire, Bet On Red, has been an outstanding producer for us, as is evident by some of the bred females towards the front end of this catalog. Yet maybe the most impressive part of Bet On Red, to us, was his exceptionally high fertility rate in both, his semen quality and his daughters!

The stars have certainly aligned to create this rare opportunity to offer the best of the "Donna" cow family in a herd bull package to the Simmental gene pool.



Lot 23A

**23A**

*Sandeen Genoa 4607*

3/15/24 • PB Simmental • ASA 4431577 • P • Tattoo 4607

W/C Bet on Red 481H

W/C Relentless 32C

**GCC Genoa 2118K**

**Sandeen Donna 1316**

JS Black Satin 9B

Sandeen Donna 8405

CE	BW	WW	YW	Milk	Stay	API
8.2	3.6	75.4	112.4	20.6	11.6	103.3

Actual Birth Weight 88#



Sandeen Donna 1316



Officer Glosser, #1 AI Technician

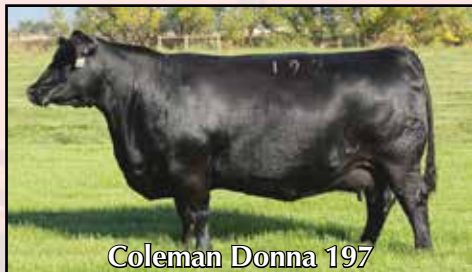




Lot 24



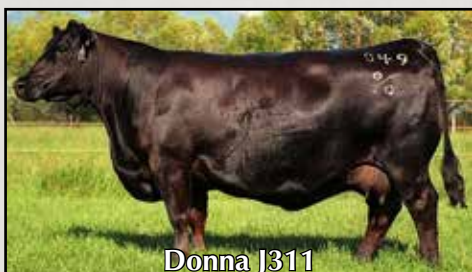
\$24K - Coleman Donna 0399



Coleman Donna 197



Coleman Donna 714



Donna J311

**24**

**Sandeen Donna 4183**

3/14/24 • 1/2 Simmental • ASA 4436259 • P • Tattoo 4183

W/C Bankroll 811D

Coleman Resolve 7219

**W/C Red Bird 269J**

**Coleman Donna 0399**

W/C Miss Angel 2870Z

Coleman Donna 7181

CE	BW	WW	YW	Milk	Stay	API
13.9	-0.1	73.1	117.0	21.4	9.1	113.5

Open Heifer

Sandeen Donna 4183 represents precisely why we love the half-blood cows!

I'm fairly convinced that Red Bird is one of the most under-utilized Simmental bulls in the country right now, relative to the quality that he produces. I'm also convinced that the Coleman Donna cows are as good of Angus cows as have ever walked on God's green earth. This particular lot has masterfully blended the richest of lineage from those exceptional bovine in both respective breeds to engineer, what we would consider SimAngus excellence.

In terms of being the "Sandeen Kind", Donna 4183 is probably as near phenotypically flawless as we can make one. 4183 has been an absolute standout in her pasture all along. She truly expresses the finest genes from each side of her pedigree.

As we project this one into the future, she will undoubtedly develop into a massively constructed matron, with a high degree of efficiency, yet offer plenty of real-world performance. She represents the embodiment of maternal proficiency at its finest!



Lot 25

**25**

***Sandeen Loaded Lady 4147***

3/18/24 • PB Simmental • ASA 4431575 • P • Tattoo 4147

Mr TR Hammer 308A ET

Remington Lock n Load 54U

**Conley GCC Shocker C19 Sandeen Loaded Lady 6025**

Conley Sheza Star W32

Sandeen Lady 3025

CE	BW	WW	YW	Milk	Stay	API
9.7	3.1	80.8	128.6	15.4	8.9	104.5

Open Heifer

Sandeen Loaded Lady 4147 derives from a lineage that has earned its way up the ranks at the Sandeen Ranch, by quite simply out working and out producing the competition. She carries the proven pedigree that has highlighted this event before with high sellers such as the \$200,000 Sandeen Loaded Lady 2625 going to Ferguson Cattle Co and Sandeen Loaded Lady 2618, the \$125,000 selection of MRB Cattle Co.

4147 possesses that stout skeletal design and 3-dimensional build that have made us appreciate her ancestors that came before her, and now currently highlight the donor programs at their respective cattle operations. She exhibits that striking good look and near flawless structural make up that the Shocker sired cattle consistently deliver. This one offers the power and a massive amount of pure product that will complement, very well, the attributes of many of the popular sires being promoted today. If she never sees a show ring, this one will more than earn her keep in the donor pen.



2625 - \$200K Full Sibling



2618 - \$125K Full Sibling



8249 - \$58K Maternal Sibling

# ANIMAL Health CENTER

Albia  Oskaloosa  Knoxville  Ottumwa  Centerville

**TITAN  
WEST INC**  
Livestock Handling Equipment

## Sandeen Livestock Equipment Sales Featuring Titan West Livestock Handling Equipment

**We recently purchased a dealership for Titan West Livestock Equipment. We have used their equipment in our own operation for nearly 30 years and in our minds it is, quite simply the best in terms of combining a superior design, brute strength, and a user friendly product.**

**Contact Scott Sandeen for all your needs 641-777-9153**





Lot 26

**26**

***Sandeen Lady C 4494***

3/3/24 • 1/2 Simmental • ASA 4431576 • P • Tattoo 4494

Remington Lock n Load 54U

Coleman Charlo 0256

**W/C Lock n Load 1143Y**

**Miss Charlo 6281**

Aubreys Black Blaze III

Vermillion Angus

CE	BW	WW	YW	Milk	Stay	API
14.0	-0.7	55.9	84.7	21.9	7.6	105.8

Open Heifer

Those that have followed our program for a number of years, realize the great appreciation we have for the "1143Y" daughters. They consistently make the great foundation type cows that it takes to breed up from in order to move a program in the right direction. This particular individual happens to possess the pedigree of 1143Y x Miss Charlo 6281 that has predictably produced our top-tier half-bloods, both bulls and heifers, for the past few years, with this being probably the most physically impressive to date! 4494 is stout in terms of her foot size, bone work, and just overall skeletal design, with the length of spine and massive center dimension to put a tremendous amount of pure product in a highly efficient, real-world performance-oriented package. There is certainly enough look here to show, however her greatest value will likely be realized when she begins the replicate her qualities once put into production. The predictability generated in a donor pen by this one will be second to none, as is evident by that past few siblings she's had that have topped their respective divisions in the Buildin' a Brand sales.



1281 - \$11K Full Sibling



2281 - \$50K Full Sibling



Lot 27

**27**

***Sandeen Donna 3410***

2/21/23 • 3/4 Simmental • ASA 4434356 • P • Tattoo 3410

Mr TR Hammer 308A ET

W/C Executive Order 8543B

**Conley GCC Shocker C19 Sandeen Donna 8410**

Conley Sheza Star W32

Sandeen Donna 5120

CE	BW	WW	YW	Milk	Stay	API
11.3	1.5	87.2	130.8	19.1	8.6	112.8

AI 6/2 to Sandeen/SLG Easy Out 512F

The first of the great “shocker” bred females of the offering. One of my absolute favorite sire groups every year! Donna 3410 is a tremendous individual that comes with added horsepower and can certainly be quantified as “Good Stock”. Her dam was a \$40,000 pen mate and maternal sister to the great Sandeen Donna 8302. Power in the Blood!!



**Sandeen Donna 8410 - \$40K Dam**



**Sandeen Donna 8302 - Maternal Sibling to Dam**



Lot 28

These next few lots that represent the Shocker x Donna 6386 mating are the epitome of efficiency. They possess a tremendous amount of center dimension necessary for a forage-based program. These girls are built to thrive on our fescue pastures and look good doing it.

**28**

**Sandeen Donna 3486**

2/25/23 • PB Simmental • ASA 4434358 • P • Tattoo 3486

Mr TR Hammer 308A ET

Remington Lock n Load 54U

**Conley GCC Shocker C19 Sandeen Donna 6386**

Conley Sheza Star W32

Sandeen Donna 8386

CE	BW	WW	YW	Milk	Stay	API
11.4	-0.1	69.0	105.5	16.3	10.1	117.7

AI 4/26 to THSF Lover Boy B33

**29**

**Sandeen Donna 3186**

3/3/23 • 3/4 Simmental • ASA 4434355 • P • Tattoo 3186

Mr TR Hammer 308A ET

Remington Lock n Load 54U

**Conley GCC Shocker C19 Sandeen Donna 6386**

Conley Sheza Star W32

Sandeen Donna 8386

CE	BW	WW	YW	Milk	Stay	API
11.4	-0.1	69.0	105.5	16.3	10.1	117.7

AI 4/9 to OCC Picture Perfect 738P

The dam of these heifers is a member of one of the most consistent and productive flushes ever made at Sandeen Genetics. Remington Lock N Load x Sandeen Donna 8386. Making Sandeen Donna 6386 a full sib to the dams of both Sandeen Donna 8302 and Sandeen Donna 1316.



Lot 29



Lot 30

**30**

***Sandeen Donna 3354***

3/3/23 • 3/4 Simmental • ASA 4434361 • P • Tattoo 3354

Mr TR Hammer 308A ET

Remington Lock n Load 54U

Conley GCC Shocker C19

**Sandeen Donna 6386**

Conley Sheza Star W32

Sandeen Donna 8386

CE	BW	WW	YW	Milk	Stay	API
11.4	-0.1	69.1	105.5	16.3	10.1	117.7

AI 3/30 to WHF/JS/CCS Double Up G365

Donna 3354 exhibits a bit more stature and performance than her counter parts of this flush. Yet still maintains an attractive profile and tremendous capacity in an easy fleshing package. Her January calf by Double Up should be extremely good.

**31**

***Sandeen Donna 3357***

3/5/23 • 3/4 Simmental • ASA 4434359 • P • Tattoo 3357

Mr TR Hammer 308A ET

Remington Lock n Load 54U

Conley GCC Shocker C19

**Sandeen Donna 6386**

Conley Sheza Star W32

Sandeen Donna 8386

CE	BW	WW	YW	Milk	Stay	API
11.4	-0.1	69.1	105.5	16.3	10.1	117.7

AI 4/17 to WHF/JS/CCS Double Up G365



**Sandeen Donna 6386**



Lot 32

The final pair of these Shocker x Donna 6386 females. The consistency and predictability of this mating is absolutely second to none. If you desire cows that will do a stalwart job on nothing more than grass and mineral, buy every one of these!



Sandeen Donna 6386 Udder

**32**

**Sandeen Donna 3071**

3/11/23 • 3/4 Simmental • ASA 4434357 • P • Tattoo 3071

Mr TR Hammer 308A ET

Remington Lock n Load 54U

Conley GCC Shocker C19 Sandeen Donna 6386

Conley Sheza Star W32

Sandeen Donna 8386

CE	BW	WW	YW	Milk	Stay	API
11.4	-0.1	69.0	105.5	16.3	10.1	117.7

AI 6/2 to Sandeen/SLG Easy Out 512F

**33**

**Sandeen Donna 3345**

3/7/23 • 3/4 Simmental • ASA 4434360 • P • Tattoo 3345

Mr TR Hammer 308A ET

Remington Lock n Load 54U

Conley GCC Shocker C19 Sandeen Donna 6386

Conley Sheza Star W32

Sandeen Donna 8386

CE	BW	WW	YW	Milk	Stay	API
11.4	-0.1	69.0	105.5	16.3	10.1	117.7

AI 5/18 to THSF Lover Boy B33



Lot 33



Lot 34

**34**

***Sandeen Donna 3421***

1/17/23 • 3/4 Simmental • ASA 4431983 • P • Tattoo 3421

HTP/SVF Duracell T52

W/C Lock n Load 1143Y

**THSF Lover Boy B33**

**Sandeen Donna 1421**

RP/MP Right to Love 015

Coleman Donna 4211

CE	BW	WW	YW	Milk	Stay	API
13.3	-0.2	71.3	103.3	27.4	16.1	137.2

AI 4/8 to LLW CARD True North G71

Here we offer a slightly different angle to the Donna family tree. Tracing back to a Coleman Charlo 0256 / N Bar Shadow / Coleman Donna 386 Angus female on the bottom side that has done a tremendous job during her tenure here, where her half-blood daughters have sold from \$7,500 - \$20,000, with Sandeen Donna 1421 topping that range. Donna 1421 is one of the newer members of the Sandeen & Associates donor arsenal, but she's certainly coming out strong and you will see much more from her in the coming years. The highlight of this lot, Miss Sandeen Donna 3421 would best be described as a bigger outlined female with wicked good looks, a stellar running gear, and a copious amount of center body mass. I've stated before, and it holds true still, that these Lover Boy cattle are much more than just a calving ease option. They tend to have a tremendous amount of growth and performance and make excellent females. This one will prove to be a great investment for her new owner!



Donna 1421 - \$20K Dam



Coleman Donna 005 - \$93K Foundation Dam



Lot 35

3507 as a calf

**35**

***Sandeen Lady G 3507***

1/11/23 • 3/4 Simmental • ASA 4431981 • P • Tattoo 3507

HTP/SVF Duracell T52

W/C Lock n Load 1143Y

**THSF Lover Boy B33**

**Sandeen G- Lady 1507**

RP/MP Right to Love 015

GCC Miss G Standard

CE	BW	WW	YW	Milk	Stay	API
13.9	-1.0	70.6	103.3	28.0	13.5	134.2

AI 4/3 to WHF/JS/CCS Double Up G365



**Sandeen G- Lady 1507 - \$50K Dam**

Sandeen Lady G 3507 represents the entire "Red" division of the 2024 Buildin' a Brand. Though she's the only one of her kind, in terms of color, she is bold, broody, and built to last. Designed to produce some very high-quality red baldy purebreds. Her dam is an exquisite \$50,000 selection by Tom Draper, IL from the 2022 Buildin' a Brand sale. This Lover Boy x 1143Y combination has been an exceptional cross here at Sandeen Genetics. A rare and useful find in this red female that possesses the same heritage as our black heifers that seem to do exceedingly well in a diverse host of settings.



Lot 36

**36**

***Sandeen Loaded Lady 2073***

10/1/22 • PB Simmental • ASA Pending • P • Tattoo 2073

Mr TR Hammer 308A ET

W/C Bankroll 811D

**Conley GCC Shocker C19 Sandeen Loaded Lady 8249**

Conley Sheza Star W32

Sandeen Loaded Lady 6025

CE	BW	WW	YW	Milk	Stay	API
10.2	3.3	83.9	128.3	17.0	6.4	105.3

AI 4/10 to WHF/JS/CCS Double Up G365

A strong aged Purebred Shocker daughter that traces back to the highly generative Sandeen Loaded Lady 6025. This cow family has rivaled the Donna tribe for front-end contention in this sale more than once.

Loaded Lady 2073 is powerful and flexible in her skeletal structure, wide in her pin set and robust through the center third of her body. She represents many characteristics that we appreciate about the Shocker sire group. She's backed by a dam that was the first highlighted daughter sold at \$58,000, from the now infamous Loaded Lady 6025 matron, in the 2018 Buildin' a Brand sale. There's a tremendous amount of upside genetic potential to be utilized in this powerhouse donor prospect.



Sandeen Loaded Lady 2625



Sandeen Loaded Lady 2618



Sandeen Loaded Lady 4147



Lot 37

**37**

***Sandeen Loaded Lady 3101***

3/1/23 • PB Simmental • ASA Pending • P • Tattoo 3101

HTP/SVF Duracell T52

W/C Bankroll 811D

**HPF Quantum Leap Z952 Sandeen Loaded Lady 8249**

RP/MP Right to Love 015

Sandeen Loaded Lady 6025

CE	BW	WW	YW	Milk	Stay	API
10.9	2.9	83.4	122.4	18.1	5.9	104.1

AI 4/5 to LLW CARD True North G71



LLW CARD True North G71

The Quantum Leap sire group has traditionally been very predictable and very high quality when utilized in our donor program. Today, this is the only Quantum Leap in the offering, and I think we could agree that she certainly retains the characteristics that we've come to expect of loose, flexible, structure and a big, bold, capacious rib cage, with the enhancement of pure power that the Loaded Lady 6025 cow family is noted for.

Anticipate great things from this initial mating to CARD True North! Those calves are very good!



Lot 38

What a great and undoubtedly proven mating in these Shock-er x Loaded Lady 6025 daughters! With 3494 being mated to the phenomenal young Griswold herd sire, WINC All Right. Check out the Lot 1 female to see how impressed we are with that sire group!



2618 - \$125 Full Sibling

**38**

***Sandeen Loaded Lady 3494***

2/14/23 • PB Simmental • ASA 4431605 • P • Tattoo 3494

Mr TR Hammer 308A ET

Remington Lock n Load 54U

Conley GCC Shocker C19 Sandeen Loaded Lady 6025  
Conley Sheza Star W32 Sandeen Lady 3025

CE	BW	WW	YW	Milk	Stay	API
9.7	3.1	80.8	128.6	15.4	8.9	104.5

AI 4/23 to WINC All Right 213K

**39**

***Sandeen Loaded Lady 3667***

2/14/23 • PB Simmental • ASA 4431606 • P • Tattoo 3667

Mr TR Hammer 308A ET

Remington Lock n Load 54U

Conley GCC Shocker C19 Sandeen Loaded Lady 6025  
Conley Sheza Star W32 Sandeen Lady 3025

CE	BW	WW	YW	Milk	Stay	API
9.7	3.1	80.8	128.6	15.4	8.9	104.5

AI 4/10 to THSF Lover Boy B33

The Loaded Lady cow family are very unique in their ability to add this much power and muscle, without sacrificing the essential maternal traits of fertility and milk production.

Full and maternal sibs have sold for \$200,000, \$125,000, and \$58,000. Highly predictable genetics here!



2625 - \$200K Full Sibling



Lot 39



Lot 40

2042 is a powerful female that's built stout from the ground up. She's got the muscle, power, and structure to raise bulls if that's your forte, or if someone wanted to raise Simmental qualified show steers, she's definitely got the hair and look to allow for that option. This Broker daughter has a quiet disposition and was shown at the county fair by our neighbor girl, Miss Kayden Pairs last summer. A little different twist on the Loaded Lady family, yet maintaining the high degree of power and fertility they're noted



Mr HOC Broker

**40**

**Sandeens/T-K Loaded Lady 2042**

9/12/22 • PB Simmental • ASA 4161003 • P • Tattoo 2042

SVF Steel Force S701

W/C Bankroll 811D

**Mr HOC Broker**

JM BF H25

**Sandeens Loaded Lady 8465**

Sandeens Loaded Lady 6025

CE	BW	WW	YW	Milk	Stay	API
8.1	2.7	73.3	105.6	17.6	10.5	91.6

AI 4/23 to WHF/JS/CCS Double Up G365

**41**

**Sandeens/T-K Loaded Lady 2021**

9/10/22 • PB Simmental • ASA 4161002 • P • Tattoo 2021

SVF Steel Force S701

W/C Bankroll 811D

**Mr HOC Broker**

JM BF H25

**Sandeens Loaded Lady 8465**

Sandeens Loaded Lady 6025

CE	BW	WW	YW	Milk	Stay	API
8.1	2.7	73.3	105.6	17.6	10.5	91.6

AI 4/16 to WHF/JS/CCS Double Up G365

You don't find purebred baldy Broker females for sale on every street corner these days. They rose to fame in the show ring, but have proven their true worth in the pasture. I have often considered Broker to be the equivalent of what N Bar Emulation EXT is in the Angus breed. Through there maybe a few undesirables to sort through, both sires will go down in history as top-tier female makers in their respective breeds, and will be found back in the pedigree's of all the great's as we navigate forward through history.



Sandeens Loaded Lady 8465



Lot 41



Lot 42



9761 Udder - 15 yr old great granddam

**42**

***Sandeen/TGL Lady A 332***

1/12/23 • 3/4 Simmental • ASA 4434574 • P • Tattoo 332

W/C Bankroll 811D

Ruby SWC Battle Cry 431B

**W/C Fort Knox 609F**

**Sandeen Lady A 9905**

K-Ler Dolly's Queen 609D

Sandeen Lady A 6761

CE	BW	WW	YW	Milk	Stay	API
9.3	2.3	79.7	124.3	21.3	11.6	121.0

AI 3/23 to CLRS Guardian



1905 - \$48k Full Sibling

Lady A 332 displays, once again, that this is apparently a very good mating! Her full sister, Sandeen/TGL lady A 1905 made a lot of friends in the 2022 Buildin' a Brand sale where she commanded a \$48,000 valuation. The Fort Knox sire group has been good to us here. They are just good, solid, functional stock that also help out on the numerical profile. The "Lady A" cow family descends from the historic Arnold Bros. Fleckvieh herd, which injects the power and performance they were noted for with a unique amount of efficiency and fleshing ability, relative to their added size and stature. Exceptional fertility and high-quality milk production also run deep in this line. Along with her exceptional maternal attributes, this female also has the bred-in traits necessary to be an excellent herd bull producer for anyone that specializes in that particular aspect of the beef industry.



KCC1 Countertime

The Countertime bull is probably one of the most under-utilized sires in our breed. He can flat out make good stock. This pair of Countertime sisters come in out of a cooperator operation a bit green for pictures, but they have turned in on since arriving here so be sure to watch for their videos. Both are bred up early for January calves and possess the genetic potency from both sides of the pedigree to be incredibly good producers.

**43**

**TGL Miss Leah L335**

1/17/23 • PB Simmental • ASA 4254114 • P • Tattoo 335

ES Right Time FA110-4

Ruby SWC Battle Cry 431B

**KCC1 Countertime 872H**

**Sandeen Lady A 9905**

KCC1 Havana 83E

Sandeen Lady A 6761

CE	BW	WW	YW	Milk	Stay	API
10.5	3.6	91.8	140.9	16.1	13.8	135.0

AI 4/12 to W/C Bet on Red 481H

**44**

**TGL Miss Lily L334**

1/15/23 • PB Simmental • ASA 4254102 • P • Tattoo L334

ES Right Time FA110-4

Ruby SWC Battle Cry 431B

**KCC1 Countertime 872H**

**Sandeen Lady A 9905**

KCC1 Havana 83E

Sandeen Lady A 6761

CE	BW	WW	YW	Milk	Stay	API
10.5	3.6	91.8	140.9	16.1	13.8	135.0

AI 3/23 to SSC Shell Shocked



Sandeen Lady A 9905 - Donor Dam



Lot 45

**45**

***Sandeen Lady G 3199***

3/18/23 • 3/4 Simmental • ASA Pending • P • Tattoo 3199

Remington Lock n Load 54U

Mr HOC Broker

**W/C Lock n Load 1143Y**     **GCC Ms Broker D198**

Aubrey's Black Blaze III

Y219

CE	BW	WW	YW	Milk	Stay	API
14.2	-0.2	65.3	92.1	20.7	7.7	104.5

AI 5/15 to Sandeen/SLG Easy Out 512F

This individual carries a pedigree that placed four high quality sisters in this sale in 2021 that averaged \$29,750 that day. Aside from that particular lineup, the D198 cow has also produced the \$100,000 Sandeen High Profile in 2020, the \$42,000 Sandeen Lady G 3069 in 2023, and a full sister to 3069 that sells as the lot 18 sale feature in this year's Buildin' a Brand sale. The D198 cow is an incredibly predictable and potent producer with any sire of the Lock N Load line we've ever used on her. The guesswork is definitely out of this equation. Just take her home and reap the rewards.



D198 - Dam



0344 - \$92K Full Sibling



3250 - Maternal Sibling



Lot 46

Bemindful Maid 3138 represents a whole new cow family to enter the Sandeen Genetics gene pool. For a number of years, we had admired the McCumber Angus cow herd for their forage thriving abilities and the stellar phenotype that accompanied them. So, a few years ago we decided to purchase our pick of yearling heifers out of their sale. Our selection criteria lead us to Bemindful Maid 0138 of McCumber. A massive female of excellent structural integrity that descended from the very cow family that produced the historical female maker, DHD Traveler 6807. This makes for a unique and interesting pedigree on the bottom side of this well constructed, extra hairy 1143Y daughter.

46

## Sandeen Bmndful Maid 3138

3/2/23 • 1/2 Simmental • ASA 4436260 • P • Tattoo 3138

Remington Lock n Load 54U

Mc Cumber Steadfast 635

W/C Lock n Load 1143Y

Bemndful Maid 0138 Mc Cumber

Aubrey's Black Blaze III

Bemindful Maid 413

CE	BW	WW	YW	Milk	Stay	API
14.4	-0.5	63.8	100.8	19.6	12.3	115.5

AI 5/8 to Sandeen/SLG Easy Out 512F

47

## Sandeen Lady 3516

3/22/23 • 1/2 Simmental • ASA 4434451 • P • Tattoo 3667

Remington Lock n Load 54U

Sinclair Shadow Rider (EXT)

W/C Lock n Load 1143Y

Sandeen Miss Emulation 516

Aubrey's Black Blaze III

-

CE	BW	WW	YW	Milk	Stay	API
15.3	-1.9	52.6	79.7	22.2	7.6	108.4

AI 3/30 to Mr SR Mic Drop G1534

3516 will likely not be mistaken for being the biggest, stoutest heifer in the sale, but she is a very feminine, very angular individual that has the look of female that will last a long time. She derives from a dam that has the built-in fertility and productivity of the "Emulation" Angus line through Sinclair Shadow Rider. You'll really come to appreciate this superb uddered, hard working young female once she gets into production.



Mr SR Mic Drop G1534



Lot 47



Lot 48

**48**

***Sandeen Lady C 3289***

2/7/23 • 1/2 Simmental • ASA 4434455 • P • Tattoo 3289

Remington Lock n Load 54U

Coleman Charlo 0256

**W/C Lock n Load 1143Y**

**Miss Charlo 6289**

Aubrey's Black Blaze III

Vermillion Angus

CE	BW	WW	YW	Milk	Stay	API
14.1	0.4	64.7	98.0	22.5	7.6	107.8

AI 4/30 to WINC All Right 213K



1289 - Full Sibling

An exceptionally good baldy female from the surefire 1143Y x Charlo mating! Her dam, Miss Charlo 6289, is a phenotypically impressive and highly productive cow, that absolutely thrives on a low input environment. A very nice full sib to 3289 was a \$6,000 selection of Denio Cattle Co in the 2022 Buildin' a Brand Sale. You will absolutely love this female when she drops an udder and is ready to calve to the young phenom, WINC All Right, sire of Lot 1.



Lot 49

Whoever buys this big bodied beauty will look back in about 4 years and wish they had bought every one of these 1143Y x Charlo females hat sold that day! The epitome of maternal proficiency! This little lady will have the most beautiful udder when she calves. She will wean one of your biggest, most impressive looking calves, and she'll do it on the lease amount of feed of any cow on the place. Do not be afraid to bid one more time to own a female like this. You will be glad you did for years to come!

**49**

**Sandeen Lady C 3288**

2/13/23 • 1/2 Simmental • ASA 4434454 • P • Tattoo 3288

Remington Lock n Load 54U

Coleman Charlo 0256

**W/C Lock n Load 1143Y**

**Sandeen Lady Charlo 6288**

Aubrey's Black Blaze III

Vermillion Angus

CE	BW	WW	YW	Milk	Stay	API
14.3	-0.1	63.3	95.8	22.7	7.6	108.5

AI 4/4 to WHF/JS/CCS Double Up G365

**50**

**Sandeen Lady C 3292**

2/7/23 • 1/2 Simmental • ASA 4434457 • P • Tattoo 3292

Remington Lock n Load 54U

Coleman Charlo 0256

**W/C Lock n Load 1143Y**

**Miss Charlo 6292**

Aubrey's Black Blaze III

Vermillion Angus

CE	BW	WW	YW	Milk	Stay	API
15.3	-1.9	52.6	79.7	22.2	7.6	108.4

AI 4/10 to LLW CARD True North G71

The final opportunity in the catalog to harness one of these 1143Y x Charlo daughters. Proven, predictable, productivity with a True North calf on the way a month after sale day!



Lot 50



Lot 51

**51**

***Sandeep Donna 2399***

9/12/22 • 1/2 Simmental • ASA 4436258 • P • Tattoo 2399

Remington Lock n Load 54U

Coleman Resolve 7219

**W/C Lock n Load 1143Y**

**Coleman Donna 0399**

Aubrey's Black Blaze III

Coleman Donna 7181

CE	BW	WW	YW	Milk	Stay	API
15.1	-0.9	65.2	103.6	24.8	11.0	113.7

AI 4/26 to Rocking P Private Stock H010

Cow power on the hoof and in the pedigree with this strong aged ground pounder! Her dam was purchased as the high selling yearling heifer in the 2021 Coleman Angus production sale, to create a new line of foundation "Donna" cows, now that we have a greater selection of Simmental stud sires to choose from. Coleman Donna 0399 has developed into an absolutely massive beast of an Angus cow. Which we actually discover is the only way she can be as we study the phenomenally powerful Angus matrons in her ancestry that have each contributed a great deal to the overwhelming success of the Coleman Angus program.

Coleman Donna 714, Coleman Donna 386, Coleman Donna 197 (full sib to Coleman Donna 386), KMK Donna J311, SAV Blackcap May 4136. This is just the beginning for the 0399 cow. She will build an incredible legacy for herself before she's done. Be in on the ground floor of these industry impacting genetics.



**Coleman Donna 0399**



**Coleman Donna 197 - Granddam**



Lot 52

Perhaps the stoutest of all the Lover Boys in the offering. Her dam, Sandeen Donna 1244, is a full sib to the \$130,000 Sandeen Donna 1316. We currently have four of those full sibs in the Sandeen and Associates Donor lineup, which speaks volumes to the predictable attributes brought forward by the Relentless x Donna 8405 mating, and the elevated level at which they produce.



Sandeen Donna 1244

**52**

**Sandeen Donna 3244**

1/13/23 • PB Simmental • ASA 4431984 • P • Tattoo 3244

HTP/SVF Duracell T52

W/C Relentless 32C

**THSF Lover Boy B33**

**Sandeen Donna 1244**

RP/MP Right to Love 015

Sandeen Donna 8405

CE	BW	WW	YW	Milk	Stay	API
11.4	0.3	74.7	108.3	26.0	13.5	129.0

AI 4/14 to OMF Epic E27

**53**

**Sandeen Lady G 3370**

1/29/23 • 3/4 Simmental • ASA 4431982 • P • Tattoo 3370

HTP/SVF Duracell T52

Mr HOC Broker

**THSF Lover Boy B33**

**GCC Mystic H370**

RP/MP Right to Love 015

NT David

CE	BW	WW	YW	Milk	Stay	API
9.6	1.7	78.0	113.3	25.6	10.9	119.4

AI 4/8 to WHF/JS/CCS Double Up G365

A good, solid, complete type of Lover Boy female that is dammed by an impressive G- Broker daughter that traces back to the OCC Dixie Erica cow family, with two shots of GCC Total Recall to further enhance her ability to produce the goods.



Lot 53



THSF Lover Boy B33



Lot 54

**54**

***Sandeen BLK Missie 3622***

2/25/23 • 3/4 Simmental • ASA 4431610 • P • Tattoo 3622

CKCC LD Dimension 8965

W/C Lock n Load 1143Y

**Wheatland Dimensional**

**Sandeen Blk Missie 0049**

JPCC Miss Foxy 115F

Sandeen Blk Missie 049

CE	BW	WW	YW	Milk	Stay	API
10.1	2.3	78.0	117.9	20.2	13.4	108.4

AI 6/29 to Sandeen/SLG Easy Out 512F



Missie 3471 - \$97K Full Sibling

What a way to headline this greatly anticipated “Wheatland Dimensional” sire group! 3622 comes with a little extra chrome, but phenotypically, this one is really hard to poke a hole in. Dimensional is breeding exactly the way we anticipated. He definitely tends to enhance the structural integrity and the foot quality, while adding a substantial degree of performance. His progeny are consistently very dense in their build with a tremendous amount of natural product and pay weight, and they’re able to maintain an attractive profile when used on the tidier fronted females.

BLK Missie 3622 fully exemplifies each of the fore-mentioned traits and comes with the additional merit of sharing a pedigree with the \$97,000 red headed sale feature from the 2023 Buildin’ a Brand sale.



Lot 55

**55**

***Sandeen BLK Missie 3029***

3/2/23 • 3/4 Simmental • ASA 4431611 • P • Tattoo 3029

CKCC LD Dimension 8965

W/C Lock n Load 1143Y

**Wheatland Dimensional**

**Sandeen Blk Missie 0049**

JPCC Miss Foxy 115F

Sandeen Blk Missie 049

CE	BW	WW	YW	Milk	Stay	API
10.1	2.3	78.0	117.9	20.2	13.4	108.4

AI 5/16 WHF/JS/CCS Double Up G365



WHF/JS/CCS Double Up G365

Power, performance, and efficiency in this, once again, densely constructed Dimensional daughter. These are ideally built females to mate to some of the solid black, attractive profiling, show type bulls such as Relentless, to produce a stellar set of big bodied, good looking, blaze faced females. When they're built like this, the mating options become the fun part of the equation.



Lot 56

At the risk of sounding like a broken record, we again have a very densely construction Dimensional daughter that I see as being a great addition to a program concentrating on producing pounds-heavy bulls for commercial producers. This baldy female comes with a more ideally desired color pattern, being black to the hoof.



Wheatland Dimensional

**56**

**Sandeen Blk Missie 3567**

2/23/23 • 3/4 Simmental • ASA 4431609 • P • Tattoo 3567

CKCC LD Dimension 8965

W/C Lock n Load 1143Y

Wheatland Dimensional  
JPCC Miss Foxy 115F

Sandeen Blk Missie 0049  
Sandeen Blk Missie 049

CE	BW	WW	YW	Milk	Stay	API
10.1	2.3	78.0	117.9	20.2	13.4	108.4

AI 6/15 to Sandeen/SLG Easy Out 512F

**57**

**Sandeen Blk Missie 3940**

3/12/23 • 3/4 Simmental • ASA 4431608 • P • Tattoo 3940

CKCC LD Dimension 8965

W/C Lock n Load 1143Y

Wheatland Dimensional  
JPCC Miss Foxy 115F

Sandeen Blk Missie 0049  
Sandeen Blk Missie 049

CE	BW	WW	YW	Milk	Stay	API
10.1	2.3	78.0	117.9	20.2	13.4	108.4

AI 4/12 to LLW CARD True North G71

BLK Missie 3940 probably most closely resembles the maternal side of the pedigree. She unfortunately was raised by a sub-par recipient that set her behind her contemporaries. However, if we read between the lines, it would seem there is a female here that is built to last with the genetics to produce with the best of them.



Sandeen Blk Missie 0049



Lot 57



Lot 58



GCC Ms Broker D198



Sandeen Lady 0344

When visually appraised it becomes apparent that this is an excellent representative of both sire and dam, possessing that depth and density from forerib to flank and the exquisite combination of real-world performance with a high degree of efficiency.

**58**

**Sandeen Lady G 3329**

2/25/23 • PB Simmental • ASA 4431612 • P • Tattoo 3329

CKCC LD Dimension 8965

W/C Lock n Load 1143Y

**Wheatland Dimensional**  
JPCC Miss Foxy 115F

**Sandeen Lady 0344**  
GCC Ms Broker D198

CE	BW	WW	YW	Milk	Stay	API
9.6	2.5	82.5	120.5	19.7	10.0	100.6

AI 4/21 to WINC All Right 213K

**59**

**Sandeen Lady G 3277**

2/7/23 • 1/2 Simmental • ASA 4431613 • P • Tattoo 3292

CKCC LD Dimension 8965

W/C Lock n Load 1143Y

**Wheatland Dimensional**  
JPCC Miss Foxy 115F

**Sandeen Lady 0344**  
GCC Ms Broker D198

CE	BW	WW	YW	Milk	Stay	API
9.6	2.5	82.5	120.5	19.7	10.0	100.6

AI 6/2 to Sandeen/SLG Easy Out 512F

A very broody pair of flush mates here backed by the highly potent breeding of the \$200,000 sire, Wheatland Dimensional, their \$92,000 dam, Sandeen Lady 0344, and their \$300,000 plus producing grandam, GCC Ms. Broker D198.



Lot 59



Lot 60

**60**

**Sandeen/T-K Donna 2380**

7/20/22 • PB Simmental • ASA 4199113 • P • Tattoo 2380

W/C Executive Order 8543B

W/C Bankroll 811D

**Sandeen/SLG Easy Out**

**Sandeen Donna 0380**

Sandeen Donna 5120

Sandeen Donna 6386

CE	BW	WW	YW	Milk	Stay	API
14.2	-2.9	67.2	97.8	20.8	13.1	125.2

AI 3/29 to WHF/JS/CCS Double Up G365

This was our 12 year old neighbor girl, Kolbie's show heifer for the county fair last summer. Kolbie bought her mother to show as a cow/calf pair at the fair, then she showed this heifer as a yearling. Now she wants to sell her so she can buy another heifer to show next year. Seems like this 12 year old's got a great business plan. Now let's help her put it in motion! This is the epitome of efficiency. She ran out on short pastures much of the summer, just trying to keep her leaned up. Obviously kid friendly disposition. Due early January to Double Up with what appears to be a great udder beginning to form.

**61**

**TGL Miss Luna L331**

1/11/23 • PB Simmental • ASA 4254106 • P • Tattoo L331

Mr HOC Broker

Remington Lock n Load 54U

**Ruby SWC Battle Cry 431B Sandeen Donna 5321**

SWC Ruby Yetti 143Y

Sandeen Donna 8386

CE	BW	WW	YW	Milk	Stay	API
9.6	1.4	79.1	123.5	18.3	11.0	104.7

AI 3/23 to SSC Shell Shocked

331 is a fine baldy female that was quite simply a bit green in her condition at picture time. Take the time and study her pedigree. She is a full-sister-in-blood to the great Sandeen Donna 8302. That's a pedigree that holds some value.



Sandeen Donna 8386



Lot 62

A bigger, stouter, excellent structured fall-born female that exemplifies perfectly, why we say the Countertime's are good stock! The bottom side of the pedigree is somewhat unique today with the original Remington Lock N Load and the great CNS Black Star cow family. A really good female with an intriguing, yet solid pedigree to check out on sale day!



KCC1 Countertime

**62**

**Sandeen Black Star 2434**

10/2/22 • PB Simmental • ASA 4434458 • P • Tattoo 2434

ES Right Time FA110-4

Remington Lock n Load 54U

**KCC1 Countertime 872H**  
KCC1 Havana 83E

**FSCI Star Struck**  
CNS Black Star T702

CE	BW	WW	YW	Milk	Stay	API
12.8	1.3	75.5	117.2	20.6	15.6	138.0

AI 4/27 to WINC All Right 213K

**63**

**Sandeen Everlda E 3984**

2/19/23 • 3/8 Simmental • ASA 4434450 • P • Tattoo 3984

W/C Executive Order 8543B

Coleman Bravo

**Sandeen/SLG Easy Out**  
Sandeen Donna 5120

**Sandeen Lady MC 1984**  
McCumber Angus

CE	BW	WW	YW	Milk	Stay	API
12.2	-1.1	70.9	106.2	21.2	15.1	118.1

AI 4/2 to THSF Lover Boy B33

When we get to the final female in the catalog and they're still this good, I would tend to lean toward the fact that it's a fairly deep set of stock! The only 3/8 blood in the offering, but what a truly stunning individual, built with longevity, fertility, and functionality in mind. Truly a beautiful Easy Out daughter to round out the offering, by a Coleman Bravo dam, backed by a McCumber bred grandam.



Sandeen/SLG Easy Out



Lot 63



Lot 64

**64**

***Sandeen/T-K Dimensional 3465***

3/18/23 • 3/4 Simmental • ASA 4348850 • P • Tattoo 3465

CKCC LD Dimension 8965

W/C Lock n Load 1143Y

**Wheatland Dimensional**

**Sandeen Jauer 9465**

JGCC Miss Foxy 115F

Jauer 1020 Honesty 237

CE	BW	WW	YW	Milk	Stay	API
11.7	1.7	76.6	114.4	19.2	11.4	100.7

Age Advantage Sire



Wheatland Dimensional 1147J

Dimensional 3465 appears to be a chip off the old block! The same depth of rib, same length of spine, same rugged good looks and pounds-heavy design as his powerful Wheatland bred sire. Over the past several years we've come to admire many attributes of the Canadian cattle. In many ways they run a bit more parallel with us, in terms of their appreciation for cattle that possess a lot of pure product and mass with a degree of stoutness, yet an emphasis on udder quality and all maternal traits.

If you are looking for an age advantage bull that will flat put out an incredible set of feeding cattle while still leaving you with a females base to be proud of, the 3465 bull would be a great option with a great disposition.



Lot 65

**65**

***Sandeen Broker 3706***

1/10/23 • 1/2 Simmental • ASA Pending • P • Tattoo 3706

SVF Steel Force S701

Coleman Resolve 7219

**Mr HOC Broker**

**Coleman Donna 0399**

JM BF H25

Coleman Donna 7181

CE	BW	WW	YW	Milk	Stay	API
9.0	1.5	75.5	117.1	20.7	10.1	96.9

Age Advantaged Sire - BW 87#

A big, stout, powerful half-blood Broker son with a gentle disposition. From a dam that was the high selling yearling heifer in the '21 Coleman Angus production sale. Coleman Donna 0399 is derived from the very best "Donna" cows ever to come out of Charlo, Montana. Coleman Donna 714, Coleman Donna 386, Coleman Donna 197, KMK Donna J311.

This is undoubtedly a bull that will put out a strapping set of steers, but most importantly, his daughters will be the envy of the neighborhood, and likely the kind that you want to build a herd around.



**Coleman Donna 0399**



**Coleman Donna 197 - Maternal Granddam**



**Coleman Donna 714**



Lot 66

**66**

***Sandeen 1143Y LNL 3503***

9/7/23 • PB Simmental • ASA 4436307 • P • Tattoo 3503

Remington Lock n Load 54U

W/C Lock n Load 1143Y

**W/C Lock n Load 1143Y**

**Sandeen Donna 0503**

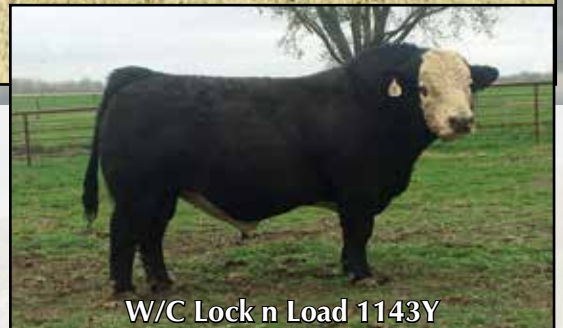
Aubreys Black Blaze III

Sandeen Donna 5033

CE	BW	WW	YW	Milk	Stay	API
14.7	0.2	67.4	101.8	23.0	11.5	116.6

Age Advantaged Sire - Birth Weight 71#

We have not sold many purebred 1143Y sons over the years. This one comes with some serious genetic credentials and a probable calving ease option. Double bred to the great female sire W/C Lock N Load 1143Y and backed by the highly prolific Donna cow family. Granddam was a \$90,000 sale feature in 2016 and great-granddam is the original Sandeen Donna 8386. What a pedigree to put on a set of Angus cows to create an awesome set of half-blood females. Foot and udder quality should be second to none on his daughters.



W/C Lock n Load 1143Y



Sandeen Donna 5003 - \$90K Granddam



Sandeen Donna 0503 Udder



W/C LnL 1143Y Hooves



Sandeen Donna 0244

**67** ***Sandeen 1143Y LNL 3241***  
9/10/22 • 3/4 Simmental • ASA 4436308 • P • Tattoo 3241

Remington Lock n Load 54U W/C Fort Knox 609F  
**W/C Lock n Load 1143Y Sandeen Donna 0244**  
Aubreys Black Blaze III Sandeen Donna 8386

CE	BW	WW	YW	Milk	Stay	API
12.6	0.8	68.4	105.8	25.6	11.1	106.5

Age Advantaged Sire

**68** ***Sandeen 1143Y LNL 3242***  
9/10/23 • 3/4 Simmental • ASA 4436309 • P • Tattoo 3242

Remington Lock n Load 54U W/C Fort Knox 609F  
**W/C Lock n Load 1143Y Sandeen Donna 0244**  
Aubreys Black Blaze III Sandeen Donna 8386

CE	BW	WW	YW	Milk	Stay	API
12.6	0.8	68.4	105.8	25.6	11.1	106.5

Age Advantaged Sire

An intriguing pair of flush brothers by the female maker "1143Y", and the \$80,000 Sandeen Donna 0244 donor. A lot of highly predictable genetics represented in this package. Linebred to the original Canadian phenom that our entire Simmental program is based around, Remington Lock N Load 54U, and blended with the unparalleled maternal strength of the "Donna" cow family line.

I've always felt that if you liked the cattle better when they're set in motion, than you do when they stop and pose, you're in the company of good stock. This pair of bulls are an excellent example of that. Built extremely sound from the ground up and developed with foot and joint longevity in mind. Ready to go cover a set of cows this spring.



Lot 68



## **69A-69E** *Potter Artisan L358 Semen Offering*

PB Simmental • ASA 4262152 • Conventional Semen

Mr SR Mic Drop G1534

Hook's Eagle 6E

**OMF Journeyman J24**

**Miss Potter J14**

OMF Deko D23

Potter Ante Z12

CE	BW	WW	YW	Milk	Stay	API
10.8	0.9	88.3	139.0	27.2	20.1	151.3

Selling in packages of 10 units

OMF Journeyman

### ***Artisan – One who makes a high quality or distinctive product.***

This is the vision we see coming out of this homozygous black, homozygous polled, genetic outcross sire. He is a bull that possesses a heavy, powerful, flexible structure with an enormous amount of natural product, while still maintaining an overly sufficient phenotypic presence. In addition, this unique individual comes with the performance of a 942# weaning weight, a 1419# yearling weight and scanned at nearly twice the average % IMF of a group that was made up of mostly halfblood SimAngus bulls.

Most importantly to our operation, on any sire we purchase, is the maternal factor. I've known the gentleman that raised this bull, Mr. Brent Potter, for nearly 25 years, and I believe him to be as honest as they come. So, when he expressed to me that the cow family behind Artisan runs generations deep in good uddered, easy fleshing, productive, fertile cows, that weighed heavily on our decision to introduce this new strain of genetics to our herd bull battery.

This is a sire that I see as being a benefit to many programs by adding a degree of power, performance and carcass quality, without sacrificing the structural integrity and maternal abilities that we deem greatly important.



**FF Burden 032H**

**70A-70E**

3/4 Simmental • ASA 4090088 • Conventional Semen

MG/GSC Authority W14C

LAH New Technology 551C

**CMFM Authority Figure**

**FF Daci 759E**

JF Ebonys Joy 9036W

FF Miss Daci 962

CE	BW	WW	YW	Milk	Stay	API
12.9	0.3	75.9	111.8	22.3	14.7	112.2

Selling in packages of 10 units



**FF Daci 759E**

We purchased FF Burden as the high selling bull, of all breeds, at Kris Blacks 2023 “Cream of the Crop” sale in Oklahoma. This bull, in our opinion, has the look of a “cow maker”. Which made perfect sense once we discovered upon research, that he was bred by a true cow-man, Dr Kevin Fenton of Stigler, OK. A Gentleman that I’ve come to respect over the years for his understanding of how to build a cow herd that excels in fleshing ability, udder quality, foot quality, and structural integrity with an additional emphasis on eye appeal. This guy quite simply loves a cow that is built to last, and in this case, has created a herd sire that will produce offspring that will do just that.

Burden is a big centered, big footed bull with excellent structure, a cocky look and a great disposition. We appreciate the fact this has outcross pedigree offers leniency to many of the heavily saturated genetic lines being utilized at this point in time, as well as the fact that his type and kind could be quite complimentary some of the more “show bred” stock we see today.



**Wheatland Dimensional 1147J**

PB Simmental - ASA #: 4135052  
CKCC LD Dimension x JPCC Miss Foxy 115F



**W/C Lock n Load 1143Y**

PB Simmental - ASA #: 2684560  
Remington Lock n Load x Aubrey's Black Blaze III



**Potter Artisan L358**

PB Simmental - ASA #: 4262152  
OMF Journeyman J24 x Miss Potter J14



**THSF Lover Boy B33**

PB Simmental - ASA #: 2983443  
HTP/SVF Duracell x RP/MP Right to Love



**Sandeen/SLG Easy Out 512F**

3/4 Simmental - ASA #: 3871780  
W/C Executive Order x Sandeen Donna 5120



**FF Burden 032H**

3/4 Simmental - ASA #: 4090088  
CMFM Authority Figure x FF Miss Dacie 962

### Past Sales Report

Since 2021 we've been very fortunate and are humbled to have marketed 199 live animals through this sale for a combined total of \$3,239,000 to average \$16,276. With that said the cattle we offer come at a multitude of price points throughout the entire offering and can be purchased by those looking to utilize extensive ET protocols as well as progressive commercial operators. As you can see in the chart nearly 60% of the cattle offered the last three seasons have been marketed below the \$6,000 mark.

### Customer Successes

At times I find that we tend to want to promote heavily on that cattle that have sold for a high dollar figure and we fail to recognize the importance of some of the purchases made by folks that maybe can't quite justify giving that larger figure at this point in time. Yet it's been proven time and again that there is still a great deal of value to be realized from many of the lots which may even be full sibs to, or of a very similar genetic make-up to, their higher priced counterparts and may not bring the very top dollar.

This little story is an excellent example of just that.

A few years ago, our good friend and neighbor, Kyle Kirkpatrick expressed an interest in making some modest investments in the "Buildin' a Brand" offering and looking back, I think he would agree, it's been a rather rewarding revenue stream for him for the past few years.

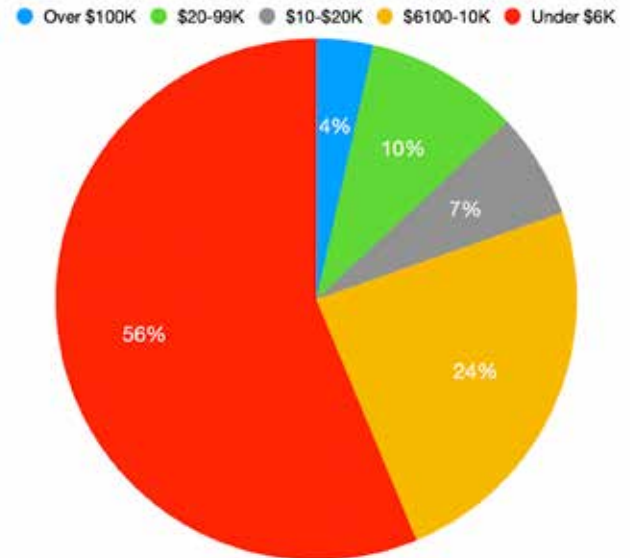
His first acquisition was a younger, greener type female in Donna 829 with a purchase price of \$3,000. Her first calf was a bull that he marketed for \$4,000. Her second was a heifer that he bred and sold for \$6,750. Not bad, a \$10,750 return on a \$3,000 investment.

Kyle then decided to reinvest in a set of embryos to put in his commercial cows. He selected a set of 3 embryos from the Sandeen Donna 4232 donor for \$1,000 per. From those, he generated two heifers, which he was able to sell for \$9,500 and \$5,300. Pretty impressive! A \$14,800 return on a \$3,000 investment.

His third investment was a \$5,500, 1143Y daughter, Sandeen Lady J9465. Her first calf was a heifer that he bred and sold for \$8,000. Her second calf was Wheatland Man-O-War son that Kyle retained to be the resident herd sire for his commercial herd. Her third calf was another bull calf by Wheatland Dimensional, that has developed into a powerhouse herd bull and highlights this year's Herd Bull division of the Buildin' a Brand sale as lot 64.

These are just a few examples from one loyal associate of the program that demonstrates the level of success that can be achieved, on any level and caliber of purchase from the Buildin' A Brand.

We Truly do enjoy seeing our customers succeed with their purchases! We spend all year studying, sorting, and culling, just to ensure that we offer the greatest chance of success possible for YOU, the folks that make it possible for us to be in this industry we love!



## Terms & Conditions...

**Health:** All animals will be eligible for interstate shipment unless otherwise announced. Health papers will be furnished for each animal over 6 months of age.

**Embryos:** Guarantee one pregnancy per package on each lot of embryos sold, if work is done by certified embryologist. All shipping costs are the responsibility of the buyer.

**Terms & Conditions:** Terms of sales will be cash, good check, or Mastercard or Visa payment. If a credit card is used a 3% service fee will be applied to purchase. All statements made from the auction block will take precedence over materials printed in this catalog. Cattle sell via the terms and conditions set forth by the American Simmental Association.

**Registration Papers:** Please leave all transfer instructions with the sale clerks at the conclusion of the sale.

**Pregnancy Information:** All of the bred females in this offering have been pregnancy checked and confirmed pregnant to the dates listed in this catalog. Buyers have 21 days to re-pregnancy check females purchased in order to confirm these dates. Please contact seller as soon as possible if any issues are found.

**Accidents:** Although every precaution will be taken to protect the safety and comfort of the buyers and those attending the sale, the seller, sale management, and all associated with the sale and its facility do not assume any responsibility for injury, theft, accident, or loss of property.

**Trucking:** Assistance will be given in making shipment after the sale, but no risk will be assumed by the seller. Expenses incurred are the responsibility of the purchaser who should furnish instructions at the time of settlement.



## Watch the Sale on CCI.live!

*The best, the fastest and most  
comprehensive marketing & bidding tool!*

### *How to Bid Online...*

- As a **buyer**, you DO NOT need to login to watch the sale but you must have a validated account to bid.

To **BID ONLINE** go to [www.CCI.live](http://www.CCI.live) in your **Chrome, Firefox, Safari** or other modern browser:

- 1) Click on the **sale schedule page**. 2) Click on the **sale of interest**.
- 3) Click on **Bid Online- Register** and then **Get Buyer Number**

- After you are logged in, you must proceed to the sale page for your auction and click **Bid Online - Register**, then **"Get Buyer Number."** Some auctions require valid credit card number on file to obtain a buyer number to bid.

- CCI.live will operate with ease on a modern **cellular device, laptop, desktop or tablet**.
- A **current browser** is important and will always make your experience better.

- **For successful bidding you must have good Internet service!** It is very important to be stationary if bidding. If you are driving and bidding, expect to have some service issues. If you are stationary on a good device, with healthy Internet, expect a very successful bidding environment. If you have slow Internet watch the "asking price" on the screen, it is real time, and refresh your browser if you feel like you have some lag.

- **Support line open during all sales. TEXT 405-400-9505** - Please alert the ranch for your hauling preferences.



Dwyer Cattle  
740 26th Street  
Roseville IL 61473

*Sandeen Genetics*  
*Presents*

# Buildin' A Brand



*Your Simmental Source for Maternally Proficient Genetics*